

**LED Strip Light Specs**



**Features**

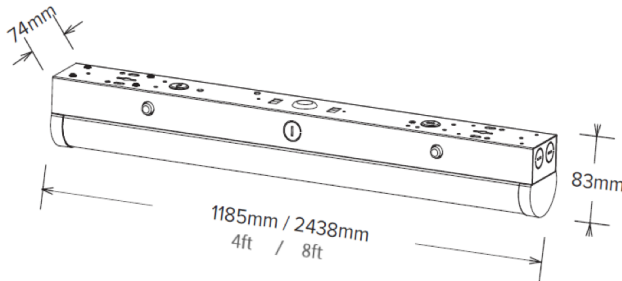
1. Luminous part is integrated and fastened to fixture body by snaplocks.
2. End-caps adopt integrated bending technique.
3. Field-adjustable Power and CCT.
4. Low voltage bi-level motion sensor available.
5. The luminous part can be easily removed when install EM or sensor.

**Applications**

Parking Garage; Warehouses; Stairwell; Office / Low bay applications

Model NO.	Voltage	Length	Power	CCT	Efficacy	CRI	Lifespan	Certificate
MA-HSTR401J-24/32/40W	AC 120-277V	4 ft	24/32/40W Tunable	3500K/4000K/5000K Tunable	130lm/W	80	>50000hrs	UL/cUL; DLC Premium.
MA-HSTR801J-40/50/64W	AC 120-277V	8 ft	40/50/64W Tunable	3500K/4000K/5000K Tunable	130lm/W	80	>50000hrs	UL/cUL; DLC Premium.
MA-HSTR802J-60/70/80W	AC 120-277V	8 ft	60/70/80W Tunable	3500K/4000K/5000K Tunable	130lm/W	80	>50000hrs	UL/cUL; DLC Premium.

**Product Dimension**



**Installation Manual**

**Surface-mounted installation:**

1. Punch a hole on the wall and put the expansion tube inside.

2FT:LF=12.13"  
4FT:LF=34.80"  
8FT:LF=35.35" & 84.13"

2. Turn off the power and wiring by using wire nuts.

To Source: BLACK (LINE)  
WHITE (NEUTRAL)  
GREEN (GND)

Fixture: BLACK (LINE)  
WHITE (NEUTRAL)  
GREEN (GND)

3. Secure the fixture on the wall and lock it in tight.

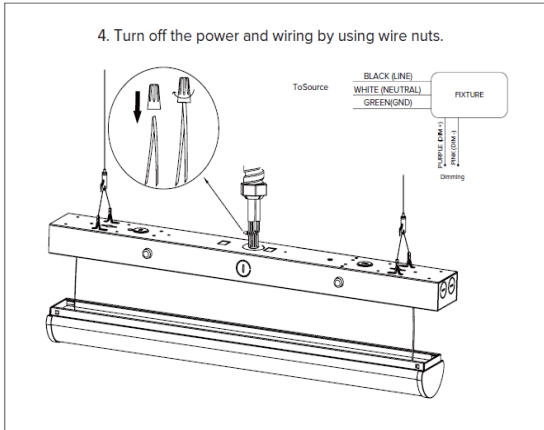
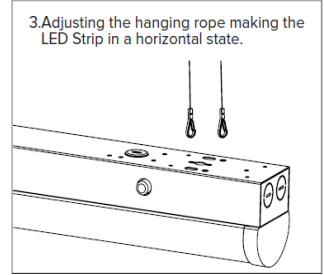
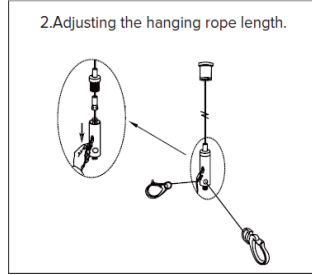
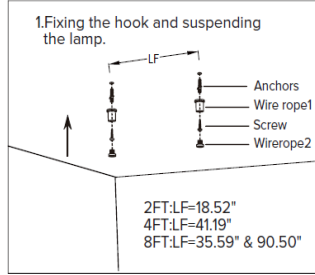
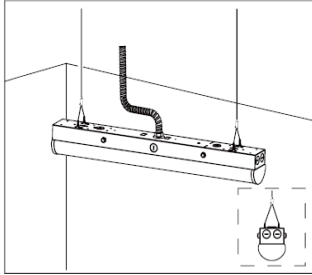
4. Press upward the cover, push side button and press, then lock it with springs tightly which located into the fixture.

5. The installation completed.

6. Press the buckle on both sides and remove, if you need to disassemble the cover.

**LED Strip Light Specs**

**Suspending installation:**



**Packing Information**

Size/ft	Outer box (L*W*H)	QTY/ctn(pcs)	N.W/pcs(lbs/Kg)	G.W/Ctn(lbs/Kg)
4ft	48.03"*7.68"*15.35" / 1220*195*390mm	8	19.9	96pcs
8ft	97.44"*7.48"*11.81" / 2475*190*300mm	6	42.1	48pcs