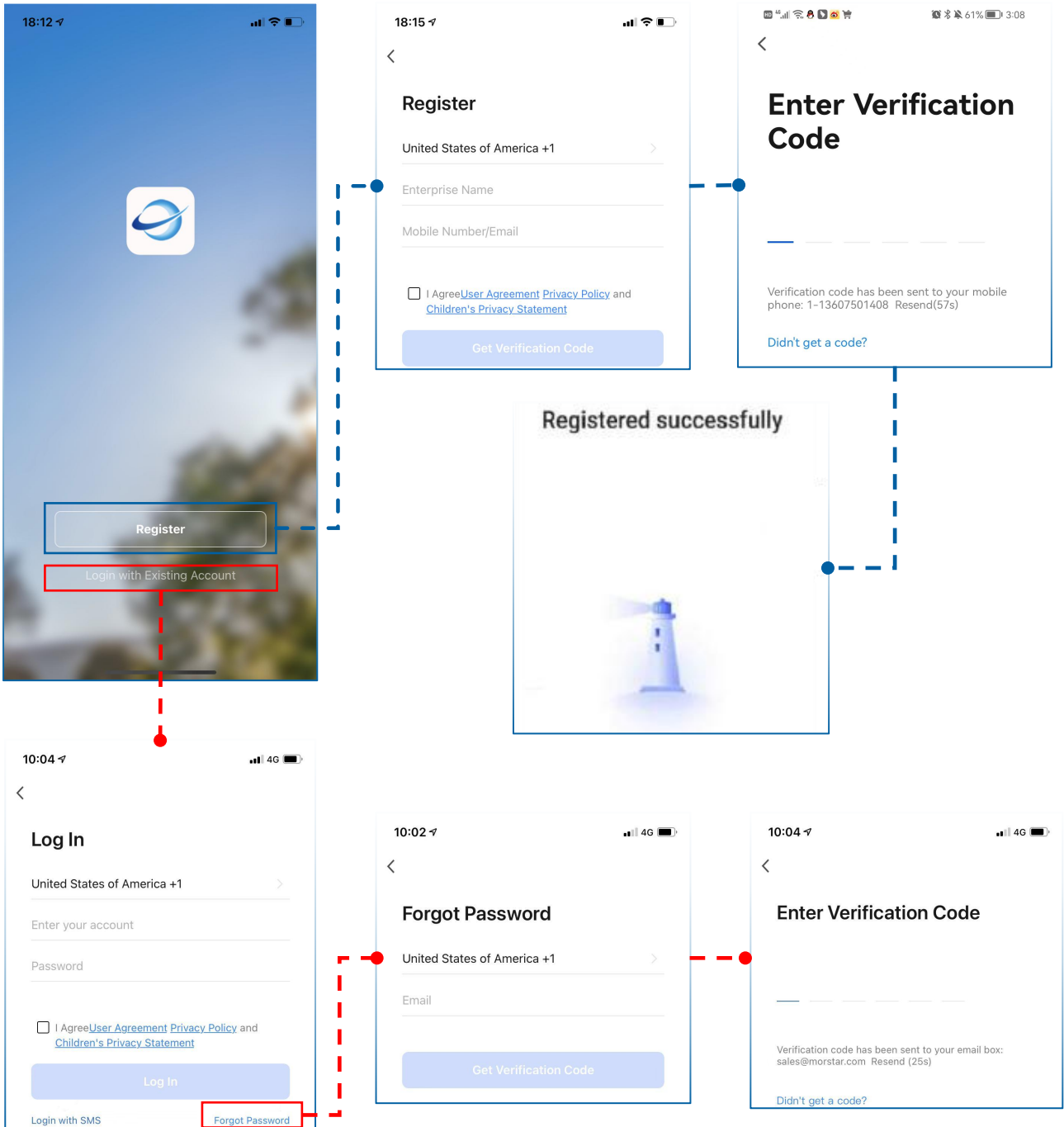


Morlink APP User Manual

1. Registration & Login

Click “Register” to create an account with your mobile number or email address. You’ll receive a verification code. Note: If you do not receive a verification code, please report back to sales@morstar.com or call +1-877-977-3732



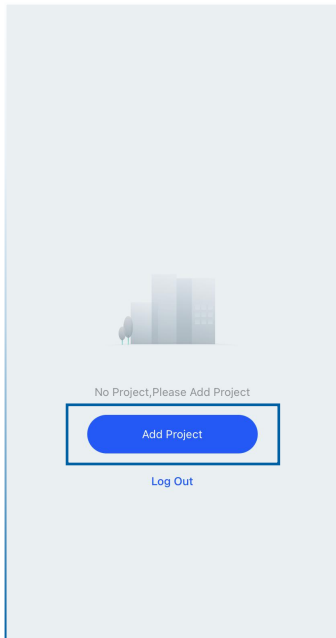
If you already have an account, but you forget the password, 1.Click“Forgot Password”
2.Enter the contact information filled in during registration. 3. Receive verification code 4. Reset password

Morlink APP User Manual

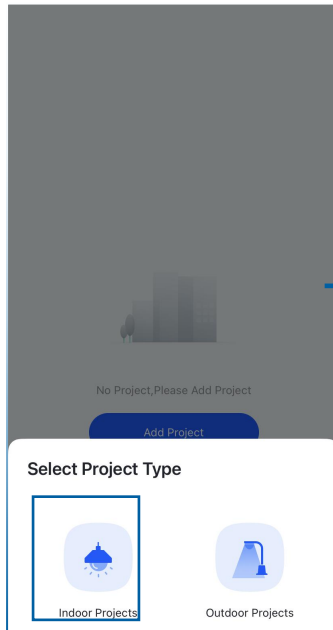
2. Create a new Project

2.1 Project Management

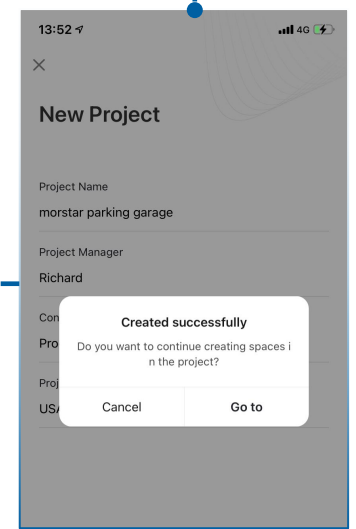
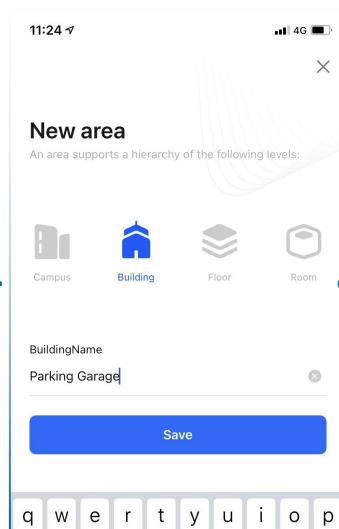
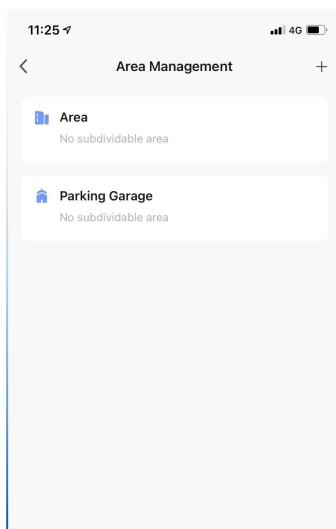
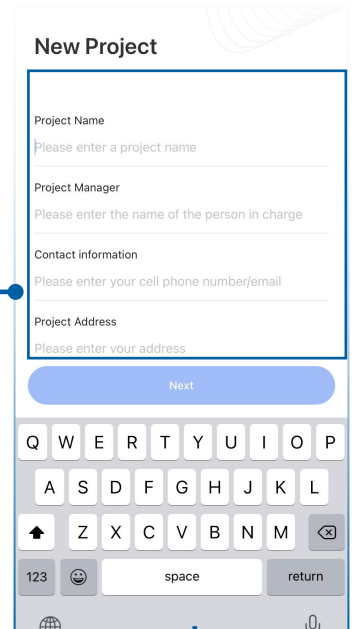
A. Add project
click "Add Project".



B. Select Indoor or
Outdoor Project Type.



C. Filling in all information
then click "Next".



F. Complete new project
area creation.

E. Select one of the project
spaces, enter a name, and
click Save.

D. Click "Go to" create a space
in the project.

Morlink APP User Manual

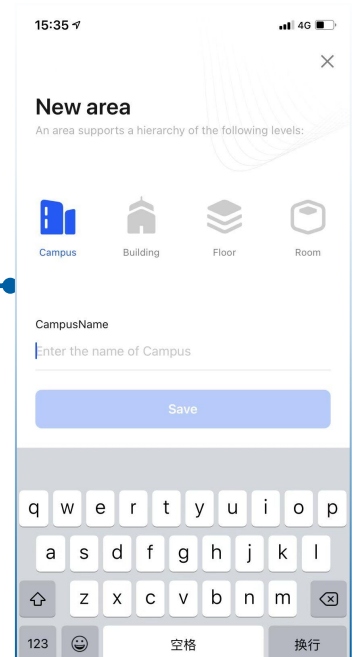
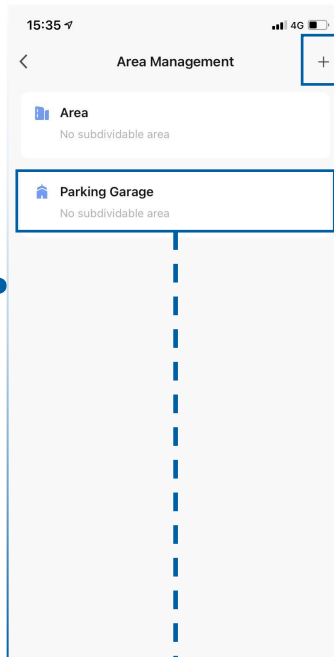
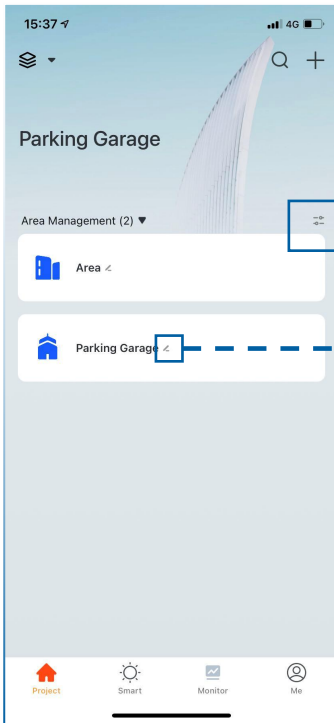
2. Create a Project

2.1 Project Management

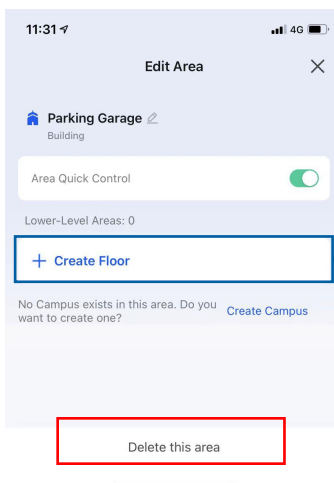
A. click "☰" "

B. Click on the "+" in the upper right corner

C. Create a new area



Note: The newly created areas here are independent, so they are generally used to add the largest space.



D. Click "✏" or click the projects created by "☰", that you can create or delete sub-projects under the project.

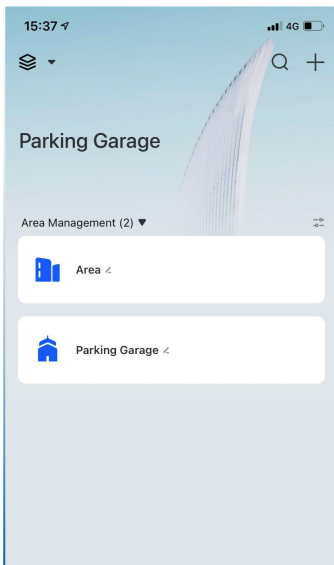
Morlink APP User Manual

3. Add device

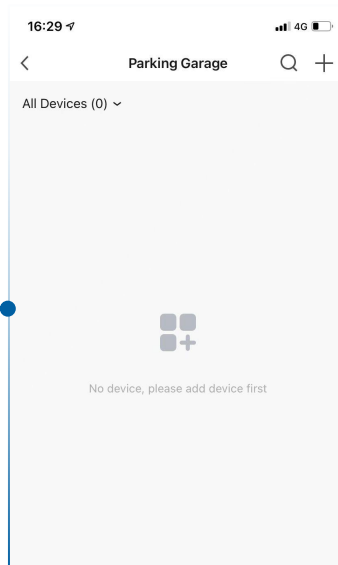
3.1 Add a Bluetooth device (with sensor)

Note: Make sure your phone has bluetooth turned on and Morlink App "me" -- "Settings Privacy Settings" -- "Bluetooth" switch shows "On"

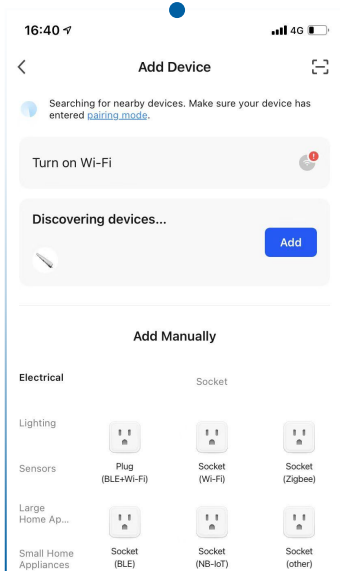
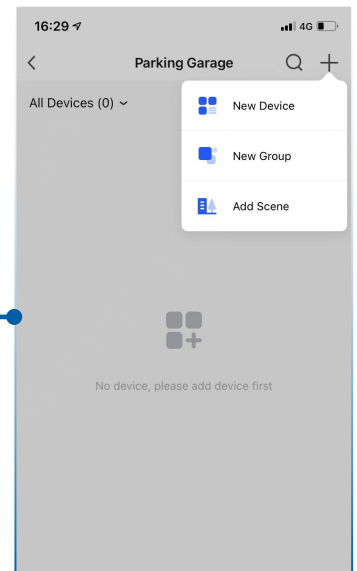
A. Return to the project interface, click on the created project, such as "Parking garage"



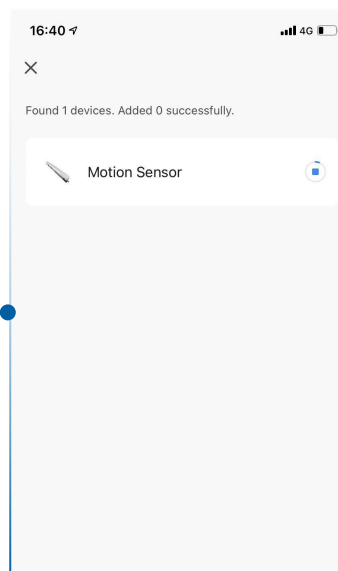
B. Click on the "+" in the upper right corner



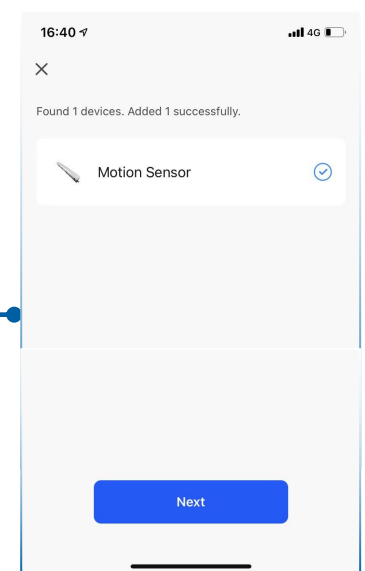
C. Select Add New Device



D. Discover the device, click "Add"



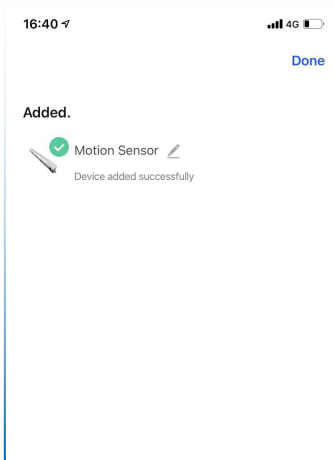
E. After adding the device, click "Next"



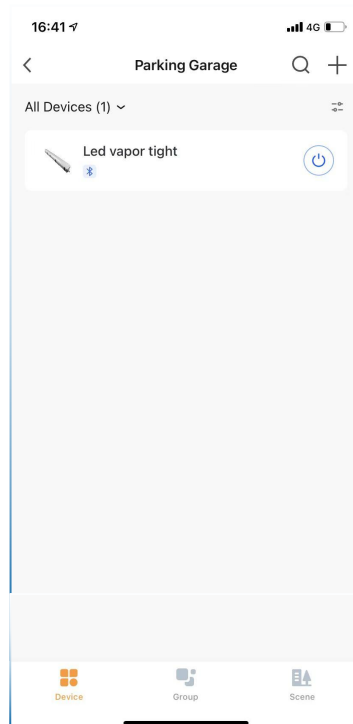
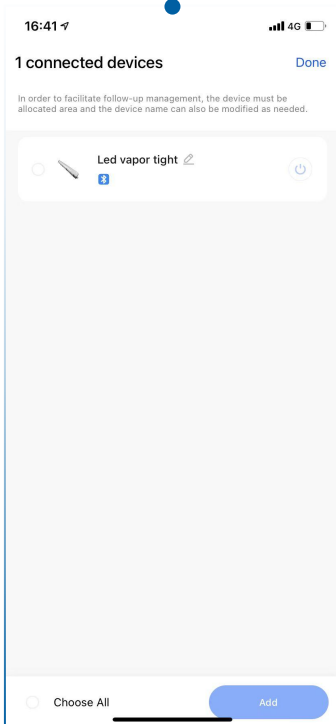
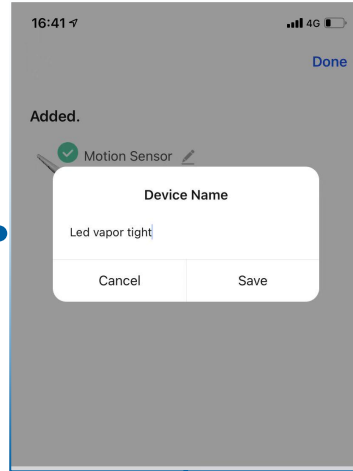
Morlink APP User Manual

3. Add device

A. Click “ ✎ ” to modify the name or click "done" to complete the device addition.



B. Modify the device name and click "save" to complete.




C. Click the desired device to add or select "Choose all" to add

Morlink APP User Manual

(4.Control Function)

I. Manual Mode



The screenshot shows the 'Manual Mode' interface. At the top, there are three tabs: 'MANUAL', 'VACANCY', and 'OCCUPANCY'. Below the tabs, there is a 'Brightness : 20%' indicator and an 'Engineering mode' toggle switch. The central feature is a large circular dial with a power button in the center, used for adjusting CCT and dimming. At the bottom, there are three icons: a lightbulb, a timer, and a clock. Dashed blue lines connect callout boxes to these elements.

Manual Model

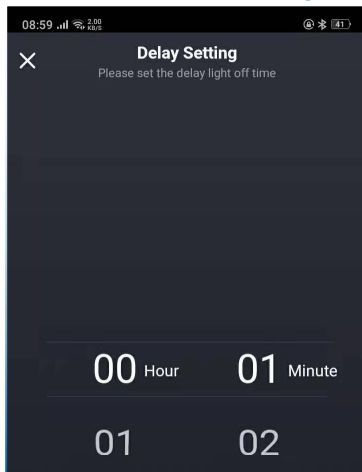
Switch

CCT Adjustable

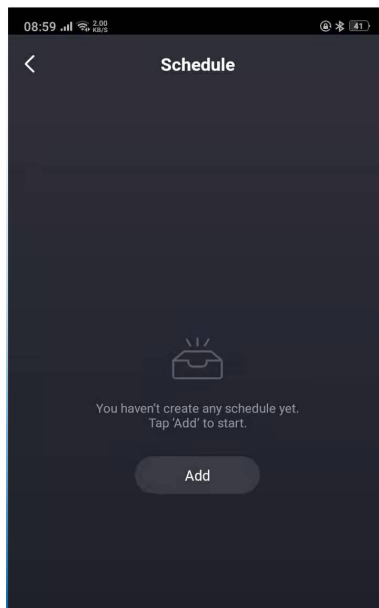
Dimmable

Note: For Schedule Function, Need To Gateway+Wifi

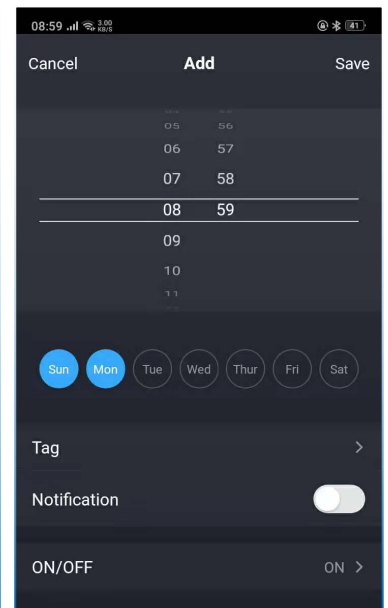
Timer Interface



The 'Delay Setting' interface shows a close button (X) at the top left. Below it, the text reads 'Please set the delay light off time'. At the bottom, there are two digital displays for 'Hour' and 'Minute', with values '00' and '01' respectively. Below these, there are two more digital displays for '01' and '02'.



The 'Schedule' interface shows a back arrow at the top left and the title 'Schedule'. In the center, there is a lightbulb icon with a lightning bolt above it. Below the icon, the text reads 'You haven't create any schedule yet. Tap 'Add' to start.' At the bottom, there is an 'Add' button.



The 'Add' interface shows 'Cancel' and 'Save' buttons at the top. Below them is a time selection grid with hours and minutes. At the bottom, there are day selection buttons (Sun, Mon, Tue, Wed, Thur, Fri, Sat), a 'Tag' field, a 'Notification' toggle switch, and an 'ON/OFF' selector.

Morlink APP User Manual

II. VAC Model/ OCC Model:

VAC is Wireless remote control light turn on/off, and light fixture auto turn off, if they are without detection target; OCC means the light fixtures auto turn on/off by detection function.

Switch Model: VAC or OCC

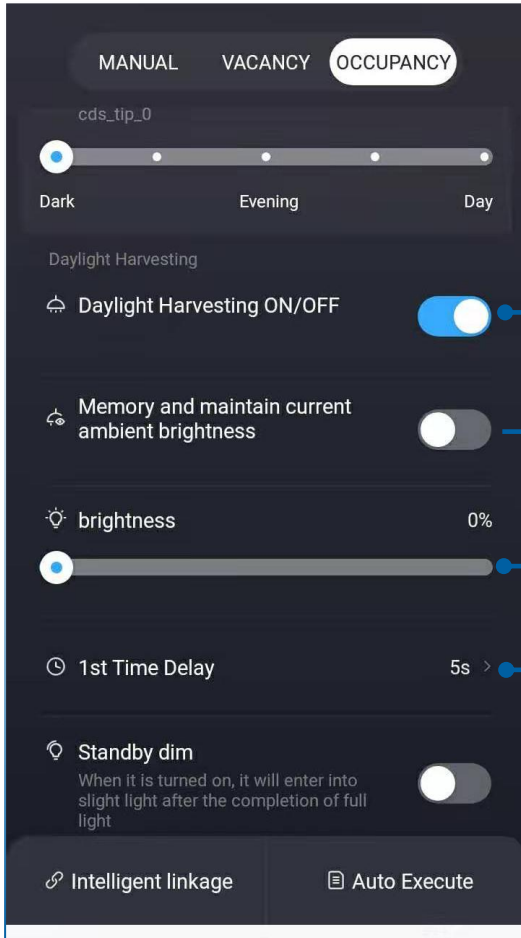
Sensor function: Turn on or Turn off

Sensitivity Adjustment

Daylight Control Setting: When the fixtures are close state, the sensor will automatically to detect around ambient brightness level whether meets the requirements of the setting. When the ambient brightness is greater than the LUX value, the light fixtures will keep turn off state even if someone goes through light fixtures.

Morlink APP User Manual

II. VAC Model/ OCC Model:



Constant illumination:

Turn on or Turn off

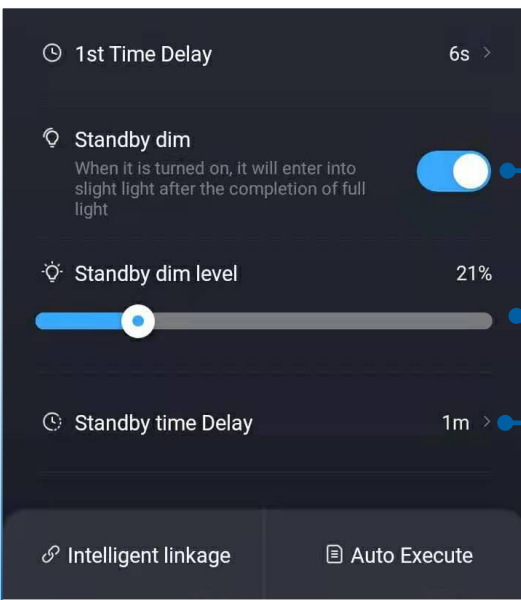
Constant illuminance LUX value

setting: set by learning the environmental value of the scene
For example, the environmental value at 9:00 in the morning is the illuminance value I want to maintain. At this time, click the learning button, and the product will automatically learn the LUX value at this time and store it in memory. As long as the constant illuminance switch above is turned on, the product will maintain the illuminance value according to the memory value value according to the memory value.

Full brightness Level setting:

Adjust the brightness of the fixture:
100%.90% or any value from 0-100%.

Brightness Delay Setting, Max 60 Minutes



Standby Dimming switch:

Turn on and Turn off

Standby Dimming Brightness

Control:0-100% can be set

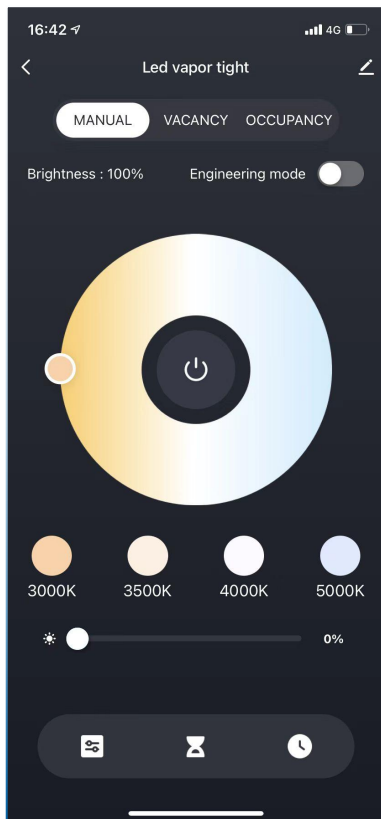
Low brightness waiting for time

setting: 0-24 Hrs; 24 Hrs is defined as infinity, the fixture will never be turned off. (Generally, no one will set it to be dimmed all the time)

Morlink APP User Manual

5. Remove device

A. Click "✎" to enter the edit page.



B. Click "Remove Device" to complete the device removal

